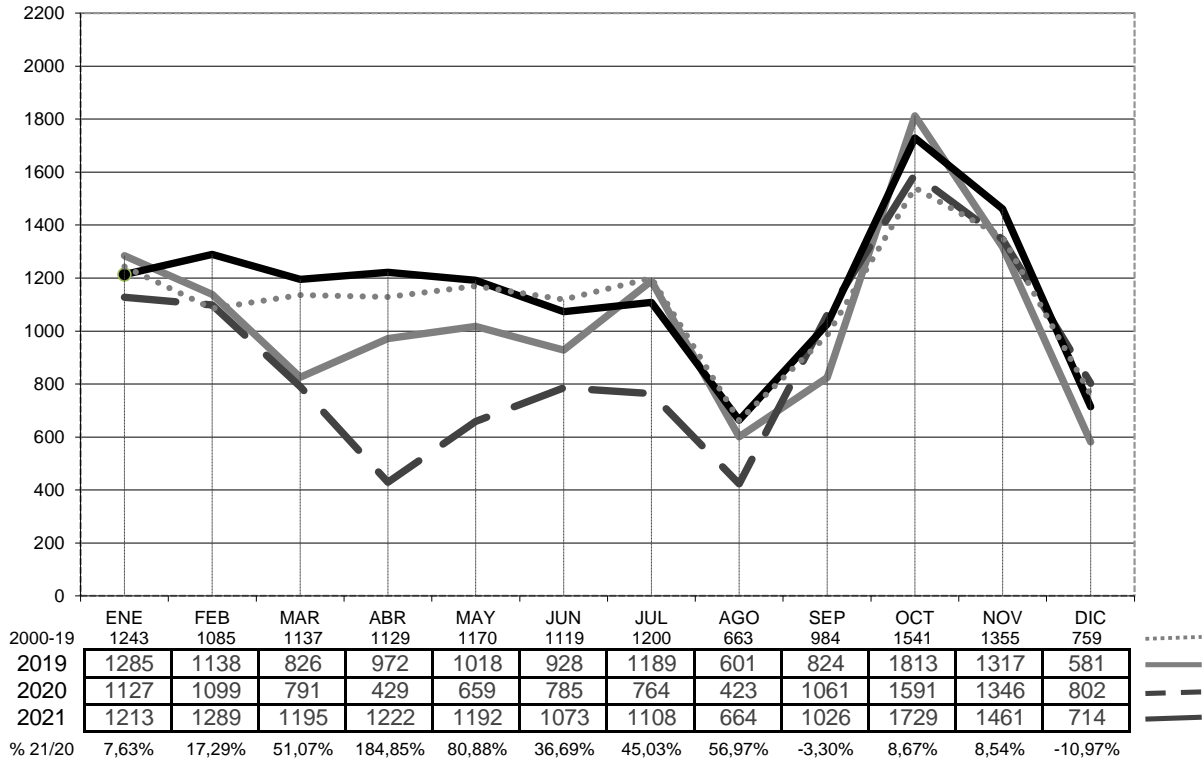


MATRICULACION MENSUAL 2021 - 2020 - 2019 - media 2000-19



ACUMULADO 2021 - 2020 - 2019

	ENE	FEB	MAR	ABR	MAY	JUN	JUL	AGO	SEP	OCT	NOV	DIC
2000-19	1243	2328	3465	4594	5764	6882	8082	8744	9728	11269	12624	13383
2019	1285	2423	3249	4221	5239	6167	7356	7957	8781	10594	11911	12492
2020	1127	2226	3017	3446	4105	4890	5654	6077	7138	8729	10075	10877
2021	1213	2502	3697	4919	6111	7184	8292	8956	9982	11711	13172	13886
% 21/20	7,63%	12,40%	22,54%	42,75%	48,87%	46,91%	46,66%	47,38%	39,84%	34,16%	30,74%	27,66%

INTERANUAL 2021 - 2020 - 2019

